



# Beautifully Maintained Office Location

AVAILABLE  
FOR LEASE

98 DARBY ROAD,  
PAOLI, PA 19301







# BEAUTIFULLY-MAINTAINED OFFICE LOCATION FOR LEASE IN PAOLI, PA

## PROPERTY FEATURES

- +/- 2,584 SF Well-Maintained Standalone Office Building
- Suitable for Professional Services
- 4-5 Offices, Large Conference, Full Kitchen, Mult. Powder Rooms, and Full Basement for added storage
- Ample On-Site Private Parking for +/- 8 Vehicles
- Abundant Natural Light
- Updated Finishes / Fixtures with Hardwood Floors throughout
- Excellent Signage Opportunity in High Traffic Area
- Well-located with Easy Access to Major Throughfares, Bus. Rt. 30, Rt. 202, & Rt. 252



LEASE RATE: \$4,500 PER MONTH

98 DARBY ROAD | PAOLI, PA 19301



**PILLAR REAL ESTATE ADVISORS**

P: 484-887-8202 | [www.PillarRealEstateAdvisors.com](http://www.PillarRealEstateAdvisors.com)

535 N. Church Street, West Chester, PA 19380



# BEAUTIFULLY-MAINTAINED OFFICE LOCATION FOR LEASE IN PAOLI, PA



98 DARBY ROAD | PAOLI, PA 19301

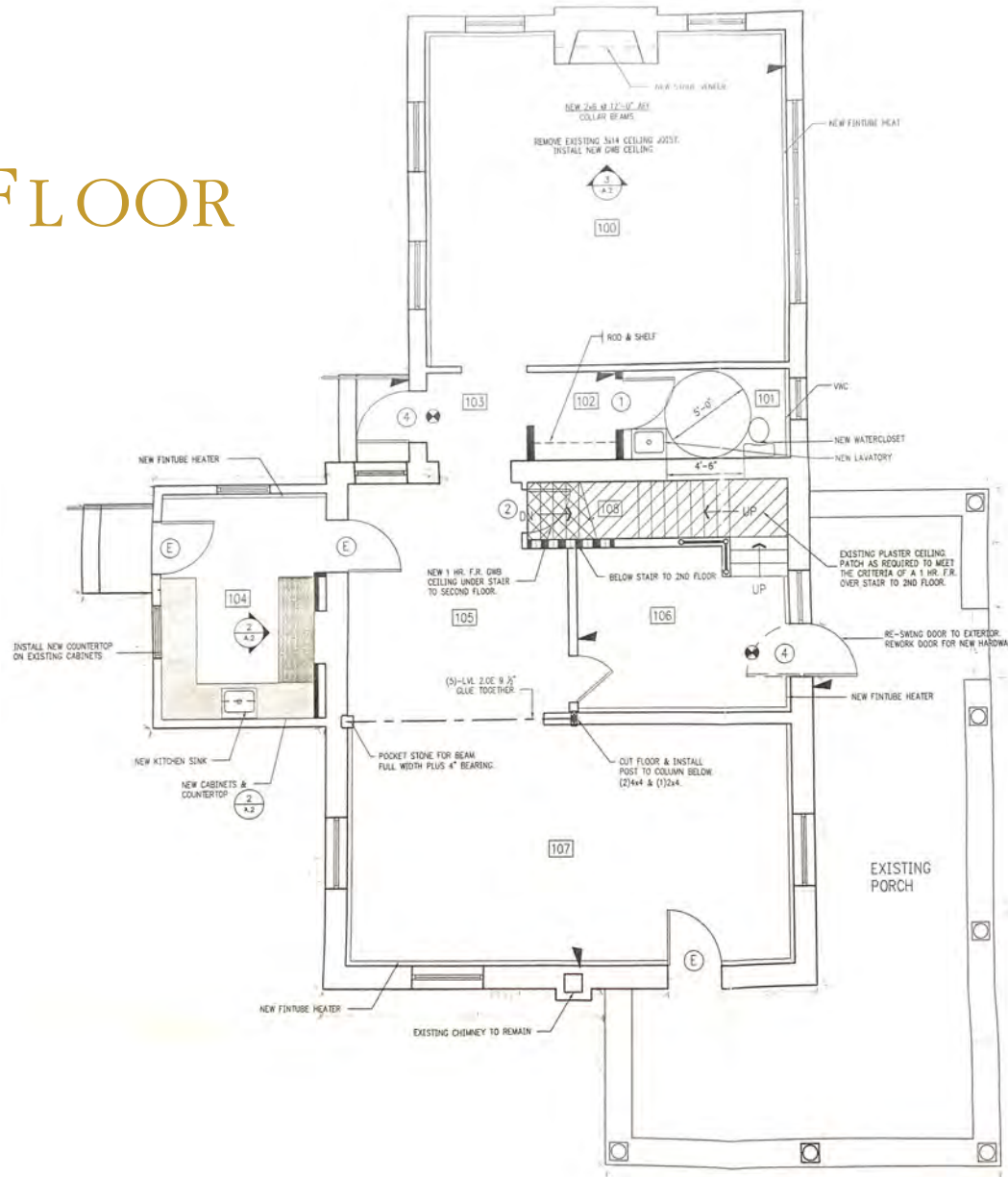


**PILLAR REAL ESTATE ADVISORS**

P: 484-887-8202 | [www.PillarRealEstateAdvisors.com](http://www.PillarRealEstateAdvisors.com)

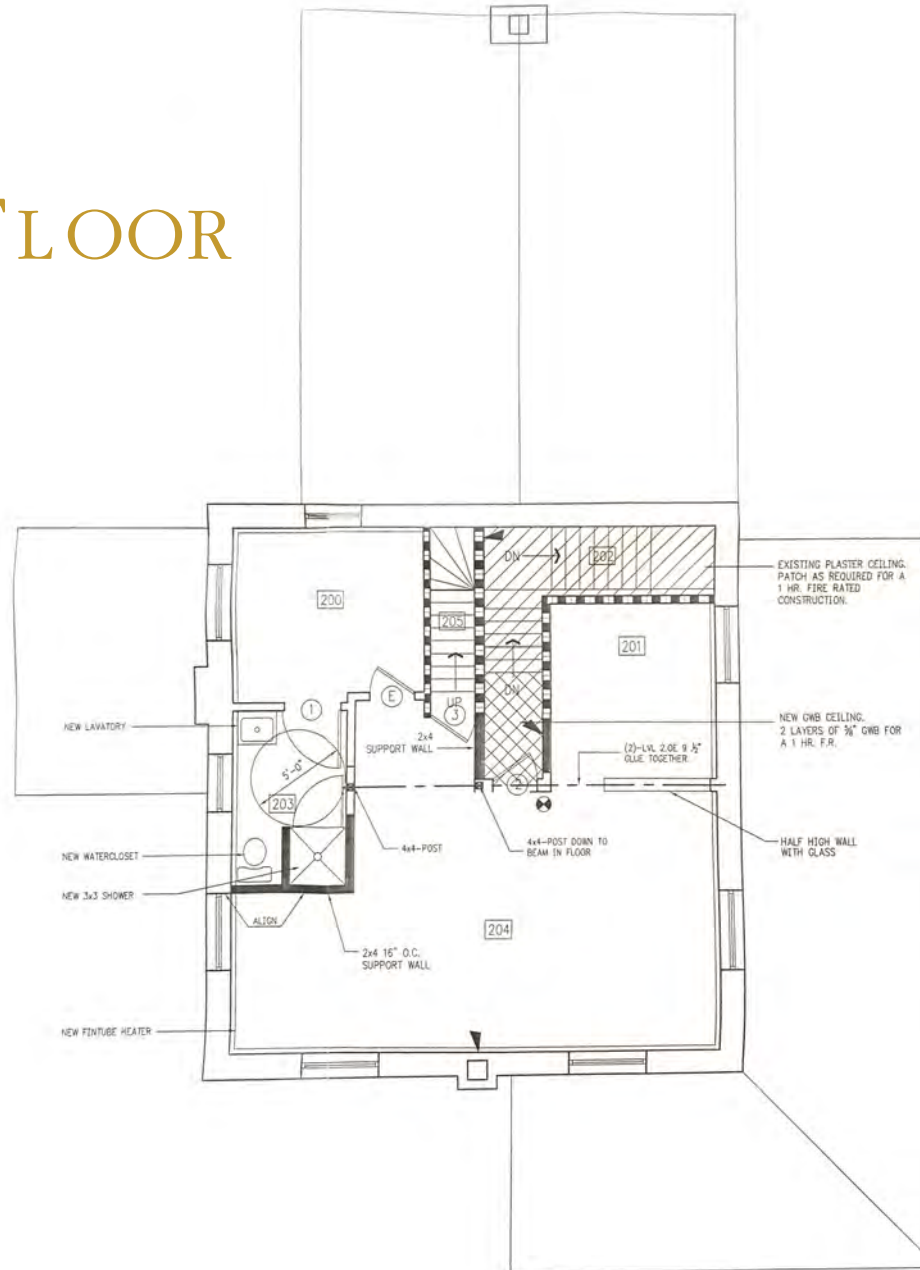
535 N. Church Street, West Chester, PA 19380

## FIRST FLOOR



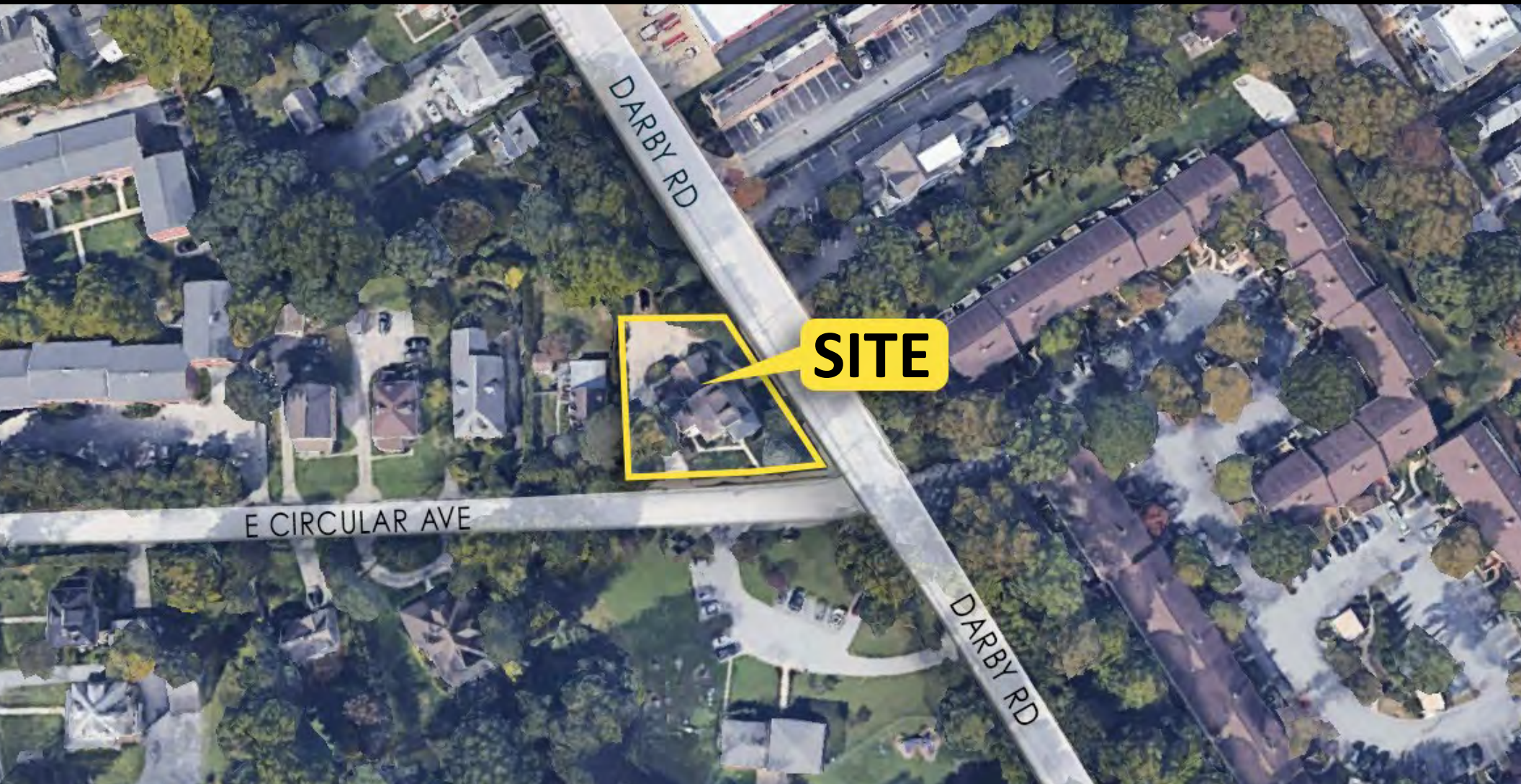


## SECOND FLOOR





# BEAUTIFULLY-MAINTAINED OFFICE LOCATION FOR LEASE IN PAOLI, PA



98 DARBY ROAD | PAOLI, PA 19301



**PILLAR REAL ESTATE ADVISORS**

P: 484-887-8202 | [www.PillarRealEstateAdvisors.com](http://www.PillarRealEstateAdvisors.com)

535 N. Church Street, West Chester, PA 19380





# BEAUTIFULLY-MAINTAINED OFFICE LOCATION FOR LEASE IN PAOLI, PA



98 DARBY ROAD | PAOLI, PA 19301



**PILLAR REAL ESTATE ADVISORS**

P: 484-887-8202 | [www.PillarRealEstateAdvisors.com](http://www.PillarRealEstateAdvisors.com)

535 N. Church Street, West Chester, PA 19380





535 N. Church Street, West Chester, PA 19380





# BEAUTIFULLY-MAINTAINED OFFICE LOCATION FOR LEASE IN PAOLI, PA

## PILLAR REAL ESTATE ADVISORS

BRINGING EXPERIENCE, PROFESSIONALISM, AND INTEGRITY  
TO COMMERCIAL REAL ESTATE BROKERAGE

### JAKE JEWELL

[JJEWELL@PILLARREALESTATEADVISORS.COM](mailto:JJEWELL@PILLARREALESTATEADVISORS.COM)

484-887-8202 | Ext. 105

### RYAN DODDS

[RDODDS@PILLARREALESTATEADVISORS.COM](mailto:RDODDS@PILLARREALESTATEADVISORS.COM)

484-887-8202 | Ext. 104

"The information contained in this document has been obtained from sources believed reliable. While Pillar Real Estate Advisors, LLC does not doubt its accuracy, Pillar Real Estate Advisors, LLC. has not verified it and makes no guarantee, warranty or representation about it. It is your responsibility to independently confirm its accuracy and completeness. Any projections, opinions, assumptions or estimates used are for example only and do not represent the current or future performance of the property. The value of this transaction to you depends on several factors which should be evaluated by your tax, financial and legal advisors to determine to your satisfaction the suitability of the property for your needs.

Photos herein are the property of their respective owners and use of these images without the express written consent of the owner is prohibited."

98 DARBY ROAD | PAOLI, PA 19301



## PILLAR REAL ESTATE ADVISORS

P: 484-887-8202 | [www.PillarRealEstateAdvisors.com](http://www.PillarRealEstateAdvisors.com)

535 N. Church Street, West Chester, PA 19380